

STATISTICS

Non-Academic Discipline Statistics 2011-2015ⁱ and Fallⁱⁱ 2015
 Prepared October 2015 by Albert Kwan, Judicial Affairs Director



		2015 Fall	2014-2015	2013-2014	2012-2013
Total Cases		3	78	60	103
Cases with Sanctions		0	59	42	62
	Restitution	N/A	\$981.16	\$0	\$2,610.30
	Fines	N/A	\$525	\$745	\$525
	Bonds	N/A	\$2,150	\$800	\$1,250
	Community Service (hours)	N/A	0	0	0
	Letters of Apology	N/A	6	2	2
	Ban from AMS Pubs	N/A	16	7	13
	Alcohol Workshop	N/A	22	10	13
	Educational Sanctions	N/A	52	32	58
Cases with No Sanctions		0	19	15	36
	No Violation	N/A	6	7	8
	Lack of Evidence	N/A	2	4	5
	Lack of Contact Information	N/A	0	0	11
	Not an AMS Member	N/A	1	2	2
	Not a Queen's Student	N/A	4	2	5
	Handled by More Appropriate Body	N/A	6	0	5
Cases that are still active ⁱⁱⁱ		N/A	2	3	5
Average # of days ^{iv}		N/A	40	37	43

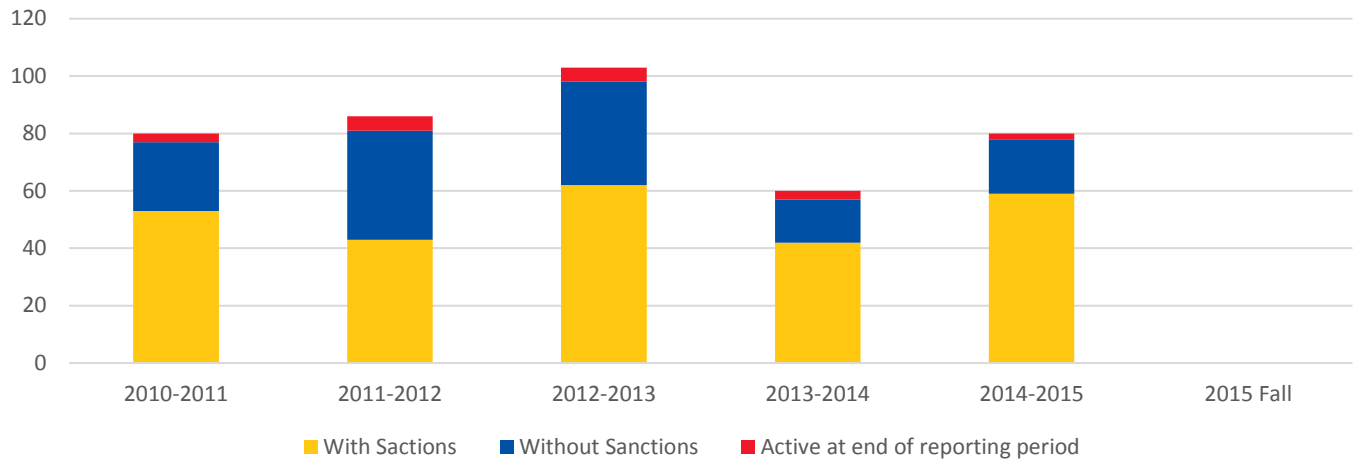
ⁱ Reporting periods are from May 1st - April 30th

ⁱⁱ Refers to cases processed between May 1st 2015 and October 4th, 2015.

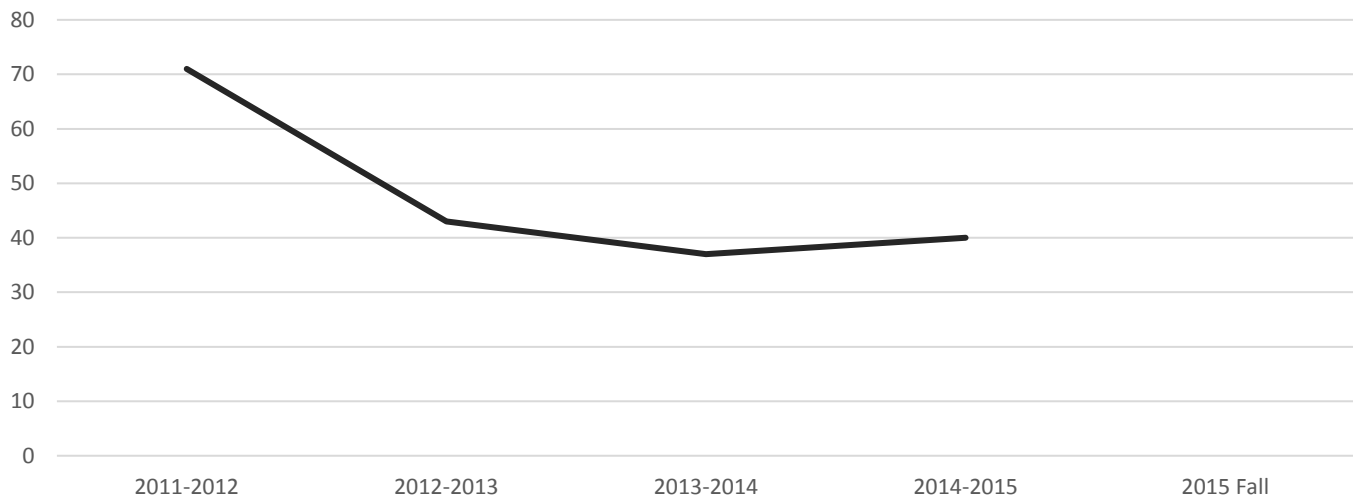
ⁱⁱⁱ Refers to cases that were still active at the end of that academic year and went to hearing in September of the following year.

^{iv} The numbers here refer to the average number of days between the date a case was opened and the date of the corresponding hearing and imposition of sanctions. Sanctions are generally due within 10 days of the Judicial Committee Decision.

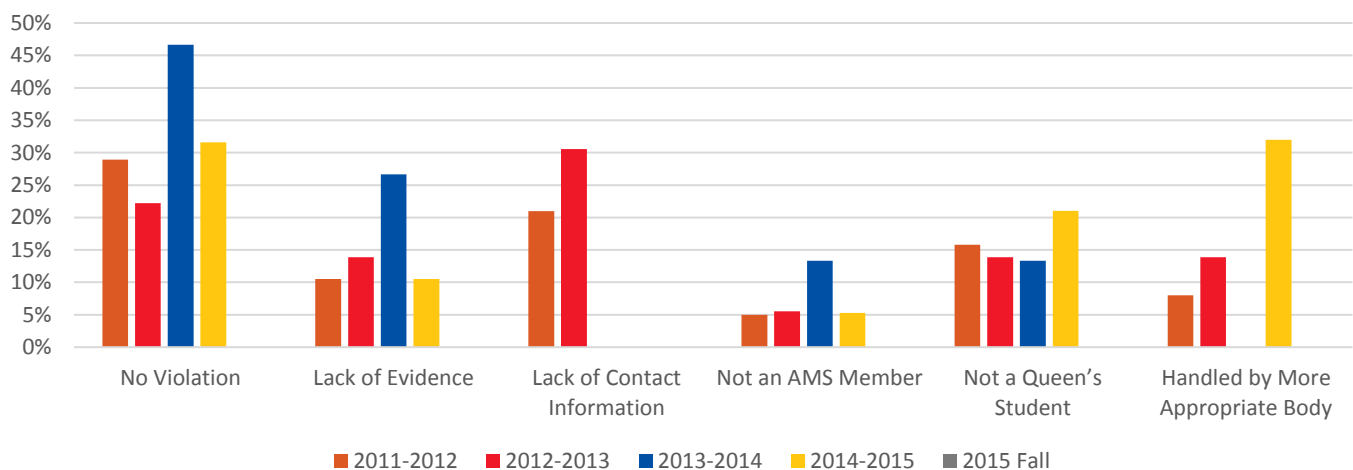
Overall Case Breakdown



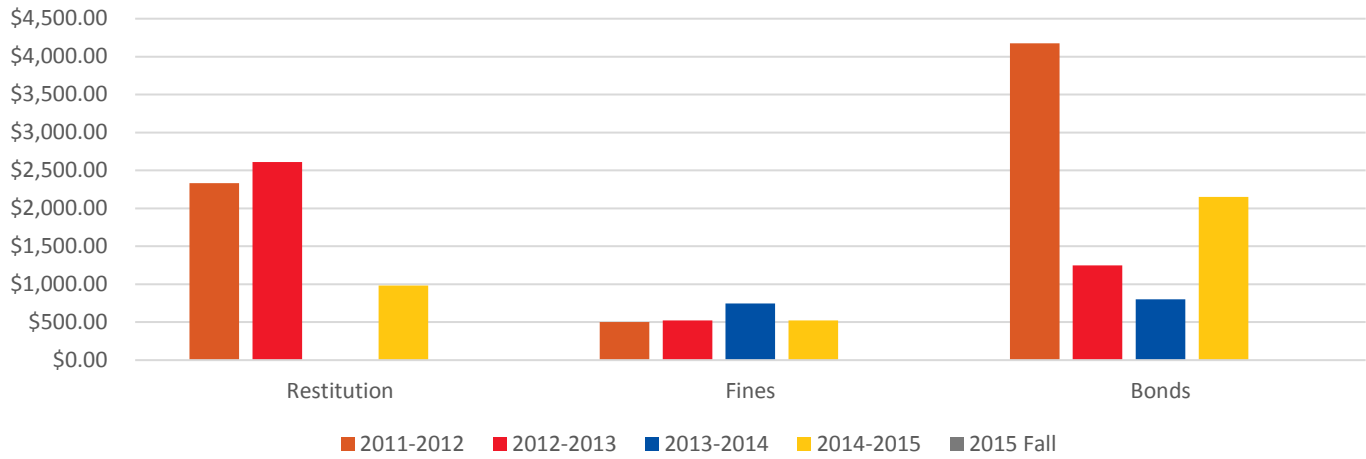
Average # of Days



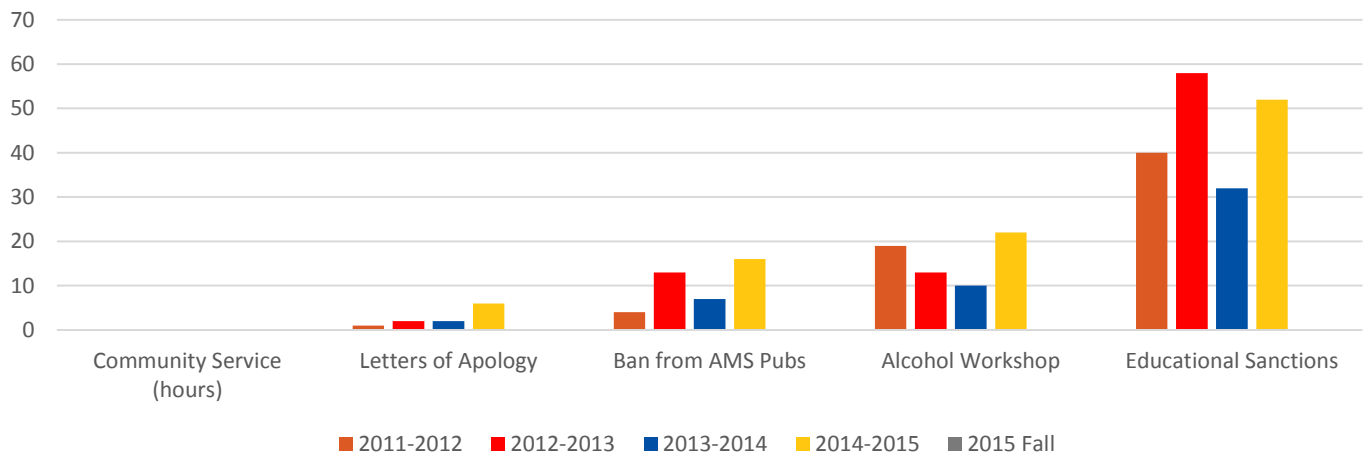
Cases With No Sanctions



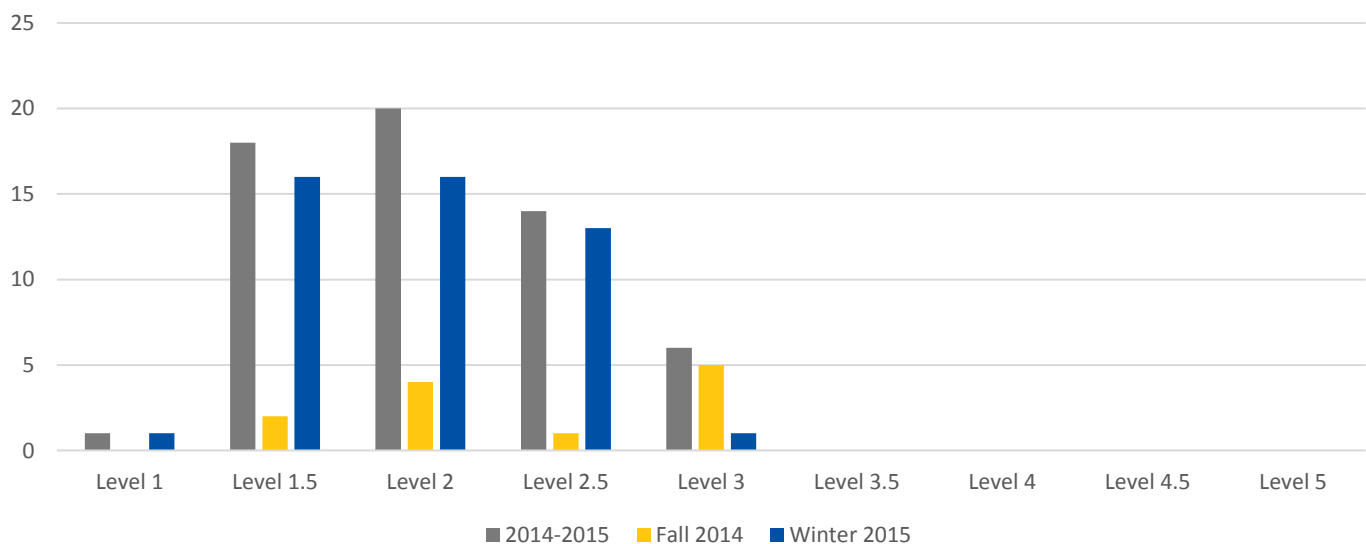
Monetary Sanctions



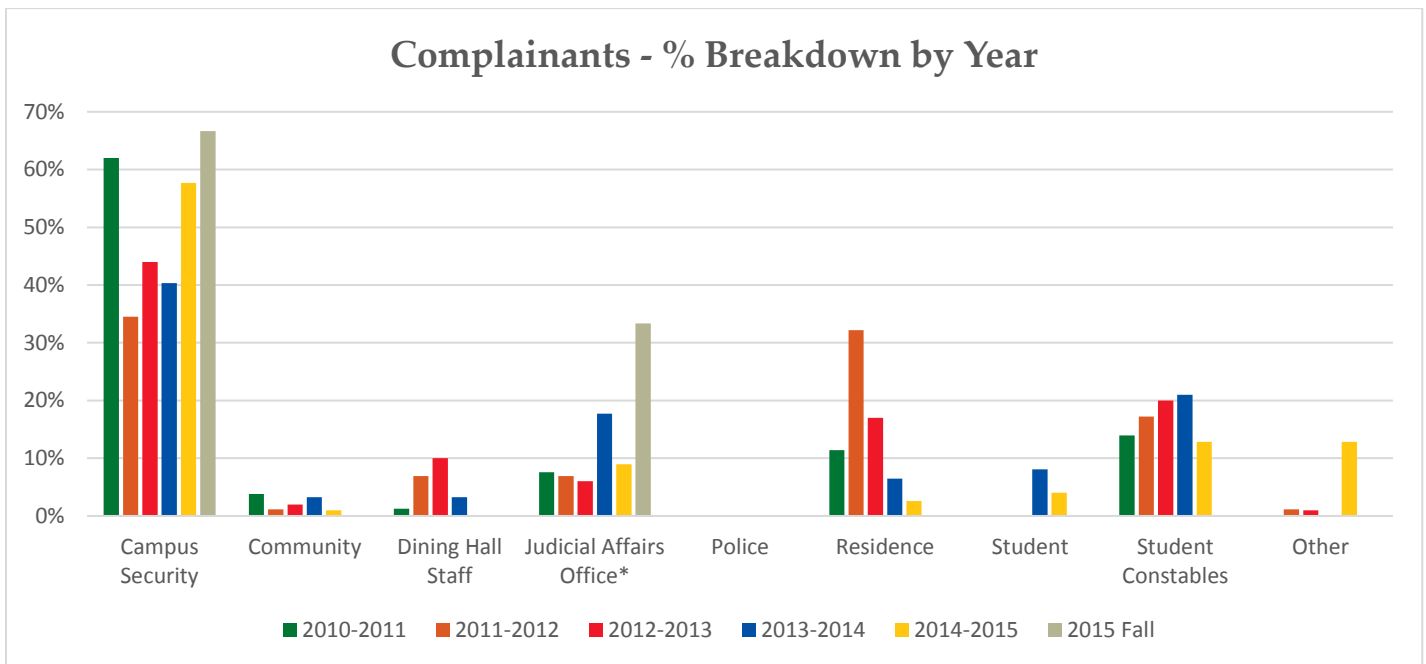
Non-Monetary Sanctions



Case Breakdown by Level of Severity

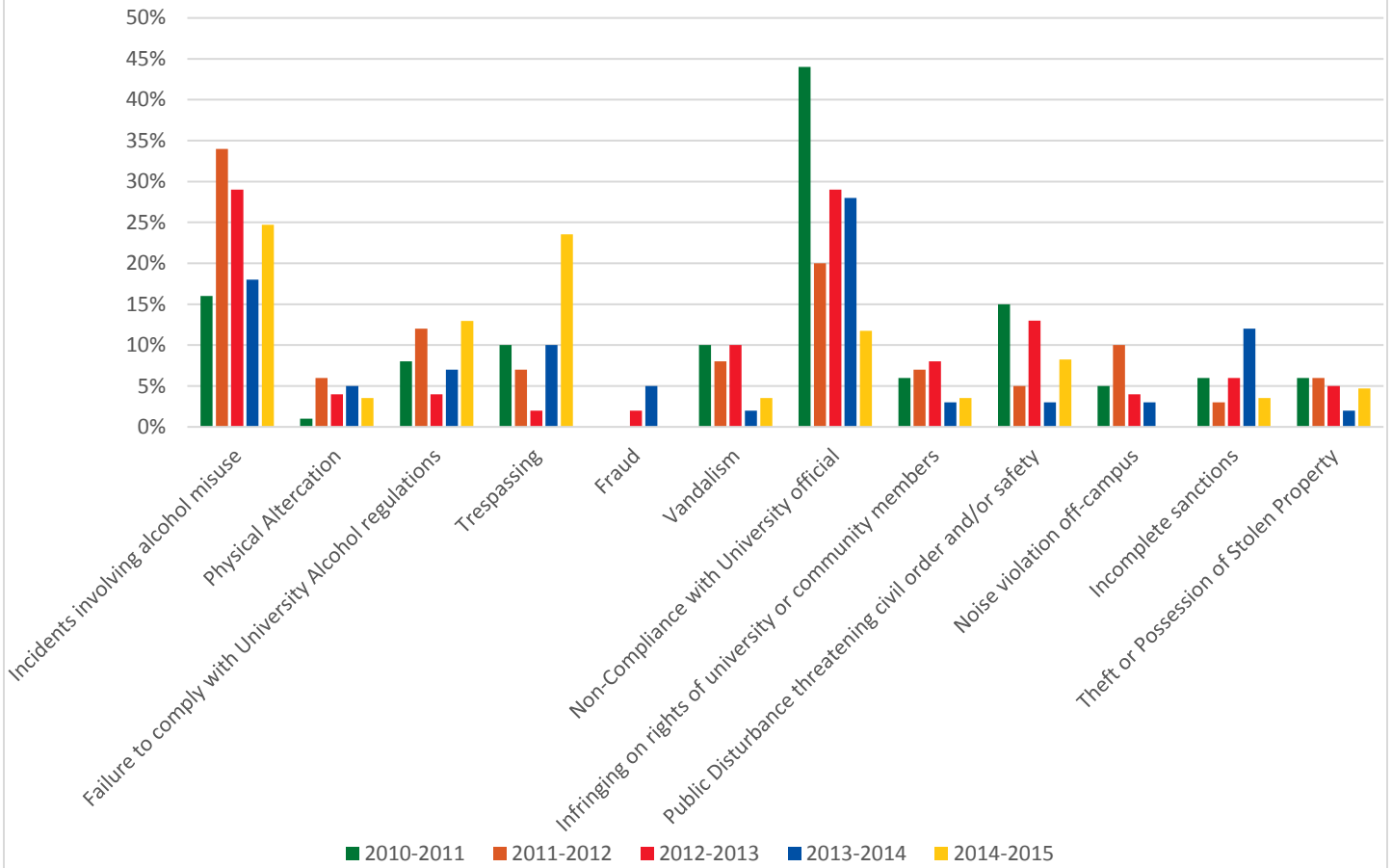


Level of Incident	2014-2015	Winter 2015	Fall 2014	2013-2014
Level 1	1	0	1	N/A
Level 1.5	18	2	16	N/A
Level 2	20	4	16	N/A
Level 2.5	14	1	13	N/A
Level 3	6	5	1	N/A
Level 3.5	0	0	0	N/A
Level 4	0	0	0	N/A
Level 4.5	0	0	0	N/A
Level 5	0	0	0	N/A



Total Complainants	2010-2011	2011-2012	2012-2013	2013-2014	2014-2015	2015 Fall
Campus Security	62%	34%	44%	40%	58%	67%
Community	4%	1%	2%	3%	1%	0%
Dining Hall Staff	1%	7%	10%	3%	0%	0%
Judicial Affairs Office*	8%	7%	6%	18%	9%	33%
Police	0%	0%	0%	0%	0%	0%
Residence	11%	32%	17%	6%	3%	0%
Student	0%	0%	0%	8%	4%	0%
Student Constables	14%	17%	20%	21%	13%	0%
Other	15%	0%	0%	1%	1%	0%

Nature of Incidents



Nature of Incidents (Total Cases with Sanctions)	2010-2011	2011-2012	2012-2013	2013-2014	2014-2015
Incidents involving alcohol misuse	16%	34%	29%	18%	25%
Physical Altercation	1%	6%	4%	5%	4%
Failure to comply with University Alcohol regulations	8%	12%	4%	7%	13%
Trespassing	10%	7%	2%	10%	24%
Fraud	0%	0%	2%	5%	0%
Vandalism	10%	8%	10%	2%	4%
Non-Compliance with University official	44%	20%	29%	28%	12%
Infringing on rights of university or community members	6%	7%	8%	3%	4%
Public Disturbance threatening civil order and/or safety	15%	5%	13%	3%	8%
Noise violation off-campus	5%	10%	4%	3%	0%
Incomplete sanctions	6%	3%	6%	12%	4%
Theft or Possession of Stolen Property	6%	6%	5%	2%	5%